



Sample PIN mailer for APAC

Front



Bank of America
Commercial Card
G.P.O. Box 864
General Post Office
Hong Kong

Your PIN is here

What you need to do now:

- Turn over for details on how to reveal your PIN.
- Check your PIN. If this PIN appears to have been tampered with or was open when you received it, please contact us immediately and do not use the PIN.
- Memorise your PIN, do not write it down and never disclose it to anyone.

This card is for business purpose only.

If you have any questions about when and where to use this card, please contact your Programme Administrator.

For general enquiries, please contact Global Card Services on (852) 3077 4632 or asiacardsupport@bofa.com.

Please be aware

- You will receive your card in a separate mail.

Turn over to reveal your PIN

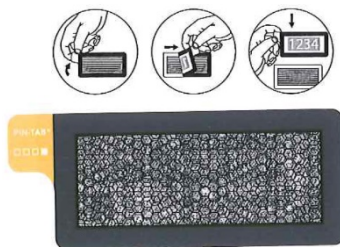
Sample PIN mailer for APAC

[Back](#)

HOW TO KEEP YOUR PIN SAFE

- Please memorise your PIN, then destroy this letter and the detached PIN.
- Never write your PIN down.
- Never let anyone else use your PIN or enter it for you.
- Never tell anyone else your PIN.
- Please try to enter your PIN discreetly and always shield it from view.
- If this PIN appears to have been tampered with or was open when you received it, please do not use the PIN and contact us immediately.

To reveal your PIN



1. Peel back and detach the tab (left). Your PIN will be on the detached slip.
2. Place the detached PIN against a white background to reveal your PIN.